

● For Lease

Sam's Club Anchored Pad Site

29th & Maize Wichita, KS



PROPERTY DESCRIPTION:

- ✓ 272 Ft. of Maize Road Frontage
- ✓ Located @ Corner of Maize Rd & 29th St
- ✓ Near New Market Square in West Wichita
- ✓ Excellent Signage Opportunities
- ✓ Conveniently Located in Front of New Sam's Club

NEIGHBORING TENANTS

Denver Mattress	Sam's Club	Walmart
IHOP	Target	Dillon's
Best Buy	Marshall's	Applebee's
Jimmy John's	The Olive Garden	Starbucks
TGI Fridays	Panera Bread	Lowe's
Academy Sports	On The Border	Chick-fil-A
McDonald's	Firehouse Subs	Pie Five Pizza
Panda Express	Old Navy	And Many More

Curt Robertson

(316) 618-1100
Wichita, KS

crobertson@insitere.com

Dan Unruh, CCIM

(316) 618-1100
Wichita, KS

danunruh@insitere.com



InSite
Real • Estate • Group

● For Lease

Sam's Club Anchored Pad Site

29th & Maize Wichita, KS

DEMOGRAPHICS

Population	1 Mile	3 Miles	5 Miles
2021 Projection	6,756	49,384	95,284
2016 Population	6,462	47,788	92,384
Income	1 Mile	3 Miles	5 Miles
Ave. HH Income	\$104,387	\$100,113	\$84,017
Business Data	1 Mile	3 Miles	5 Miles
Businesses	219	1,477	2,967
Employees	3,429	16,468	38,583

TRAFFIC COUNTS

29th & Maize 28,659 Cars per Day

Restaurant/Retail Site
OR
Build to Suit!
62,560 SF

Curt Robertson

(316) 618-1100
Wichita, KS
crobertson@insitere.com

Dan Unruh, CCIM

(316) 618-1100
Wichita, KS
danunruh@insitere.com

 **InSite**
Real • Estate • Group

● For Lease

Sam's Club Anchored Pad Site

29th & Maize Wichita, KS



Curt Robertson

(316) 618-1100
Wichita, KS

crobertson@insitere.com

Dan Unruh, CCIM

(316) 618-1100
Wichita, KS

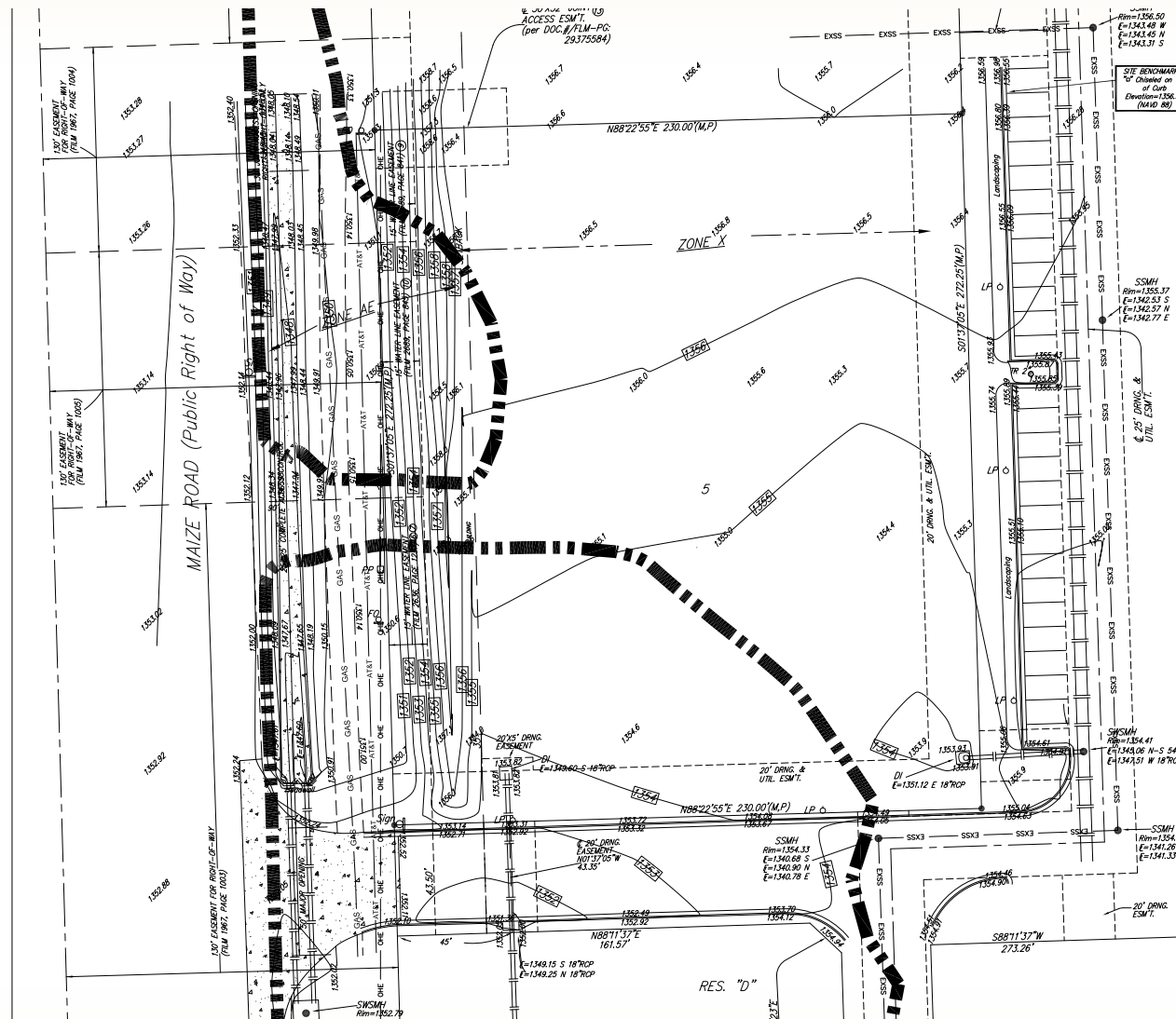
danunruh@insitere.com

  **InSite**
Real • Estate • Group

● For Lease

Sam's Club Anchored Pad Site

29th & Maize Wichita, KS



Curt Robertson
Wichita, KS
crobertson@insitere.com

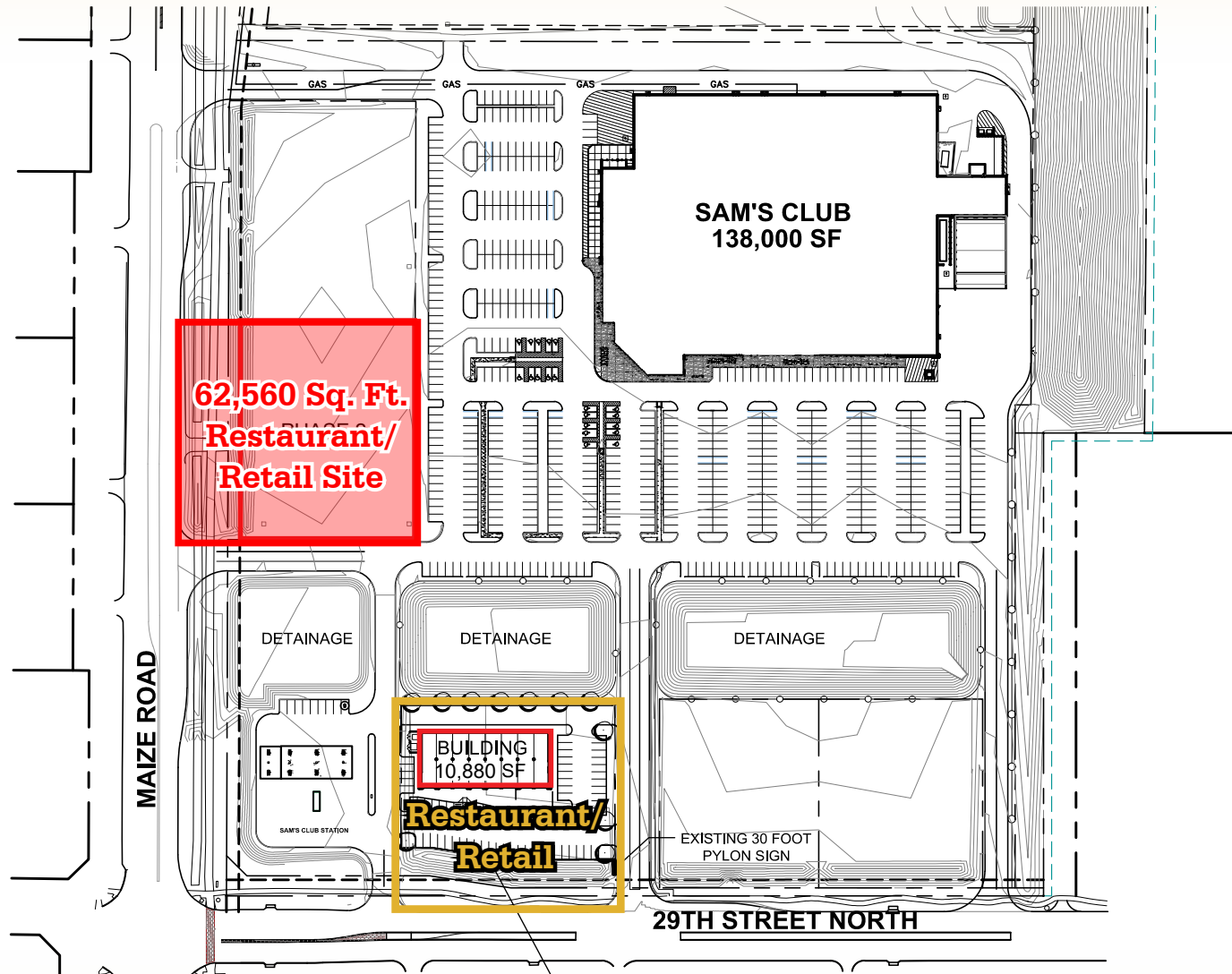
Dan Unruh, CCIM
Wichita, KS
danunruh@insitere.com

InSite
Real Estate Group

● For Lease

Sam's Club Anchored Pad Site

29th & Maize Wichita, KS



Curt Robertson

(316) 618-1100
Wichita, KS

crobertson@insitere.com

Dan Unruh, CCIM

(316) 618-1100
Wichita, KS

danunruh@insitere.com

